

Description

UPX20 Flush diaphragm silicon pressure sensor is made by adopting UPX19 or UPX6 pressure sensors. UPX19 or UPX6 is located in the front end of the process connection, so that the diaphragm contacts the viscous medium directly, and prevents the sticky medium from blocking, scaling or insanitary problems. It is especially suitable for pressure or level measurement of viscous flow or liquid medium in medicine or food industries. Its process connection has clamping type, G1/2, M20×1.5 thread type etc for options.

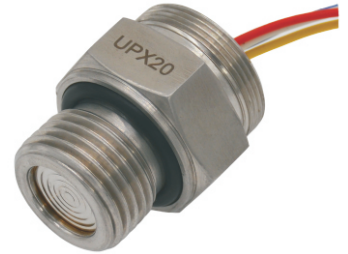
UPX20 pressure sensor is suitable for applications in medical, food and beverage industry.



2" Clamp

Features

- Constant current compensation or constant voltage compensation for option.
- Super-high cost effective
- Have gauge pressure, absolute pressure and sealed gauge pressure
- Imported pressure silicon dies
- Flush diaphragm structure, suitable for medicine, food, beverage industry

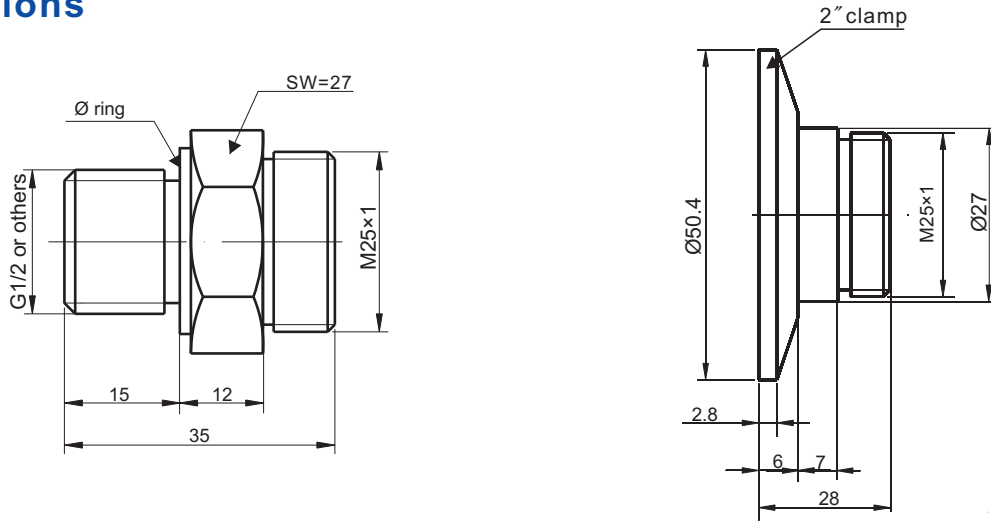


G1/2

Specifications

pressure medium	gas, viscous fluid or fluid with grains compatible to stainless steel
pressure ranges	0~0.4...400bar; 0~0.1bar...600bar for 2" clamp type
pressure type	gauge(G), absolute(A), sealed gauge(S)
overload pressure	150%FS
output signal	≥70mV(typical)
accuracy	0.25%FS(standard), 0.5%FS
zero offset	≤±2mV
long-term stability	<0.2%FS/year
excitation	1.5mA or 5V (1.5mA standard)
compensated temperature range	-10~+70℃
operating temperature range	-40~+125℃
temperature coefficient of zero	0.2%FS/10℃
temperature coefficient of span	0.2%FS/10℃
input/output resistance	2~6kΩ
insulation resistance	100MΩ@50VDC
response time(10%~90%)	≤1ms
process connection	G1/2, 2"clamp, or others
electrical connection	4 flexible wires
wetted part material	316
diaphragm material	316L
filled oil	silicon oil

Dimensions



Electrical connection

connection	color
excitation“+”	red
excitation“-”	blue
signal“+”	yellow
signal“-”	white

Ordering code

UPX20		range	measuring range: 0~0.4...600bar; 0~0.1bar...600bar for 2" clamp type		
		(0~X)bar	X: actual measuring range		
			code	pressure type	
			G	gauge	
			A	absolute	
			S	sealed gauge	
			code	compensation method	
			C1	constant current power compensation(1.5mA standard)	
			C2	constant voltage power compensation(5V DC)	
			code	process connection	
			Pc	2" Clamp	
			P2	G1/2	
			P4	M20x1.5	
			P6	1/2NPT	
			Pz	as customer's request	
UPX20	0~10bar	G	C1	P2	